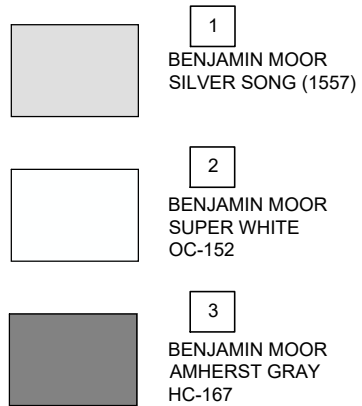


SOUTH ELEVATION

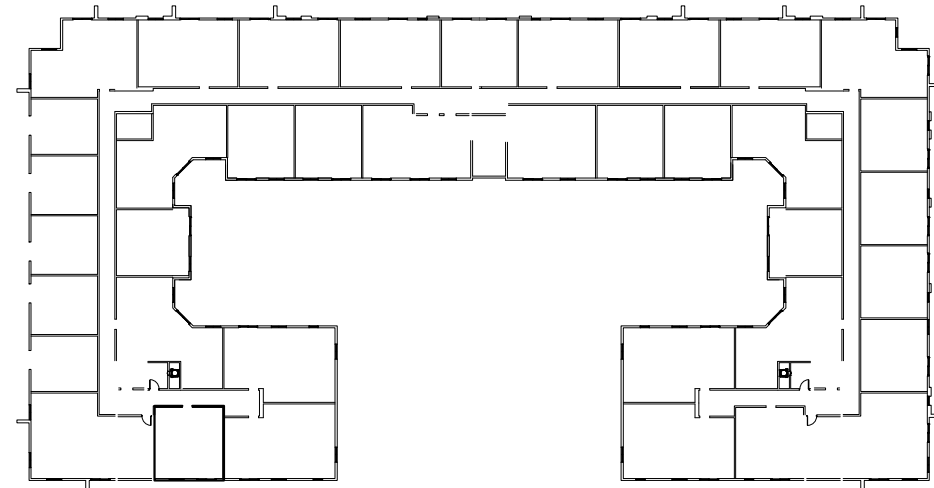
SCALE: 1"= 1/16"

COLOR PALETTE



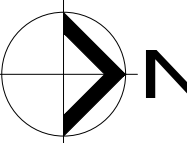
| MATERIAL LEGEND | |
|-----------------|---|
| KEY VALUE | KEYNOTE DESCRIPTION |
| 01 | MASONRY: CMU/CONCRETE SUBSTRATE W/SMOOTH STUCCO FINISH, HIGH BUILD, ACRYLIC WATERPROOFING COATING (THOROCOAT BY BASF BUILDING SYSTEMS, OR ACCEPTABLE EQUIVALENT), COLOR PAINT TO BE SELECTED BY ARCHITECT. |
| 02 | ALUMINUM SLIDING GLASS DOOR ASSEMBLY - W/ LAMINATED TINTED GLASS W/ A HIGH PERFORMANCE COATING; TO MEET WIND LOAD REQUIREMENTS |
| 03 | ALUMINUM WINDOW ASSEMBLY - W/LAMINATED TINTED GLASS W/ A HIGH PERFORMANCE COATING; TO MEET WIND LOAD REQUIREMENTS. PROVIDE SAMPLES TO ARCHITECT FOR REVIEW. |
| 04 | ALUMINUM STOREFRONT ASSEMBLY FOR NON-RESIDENTIAL AREA. LAMINATED TINTED GLASS W/ A HIGH PERFORMANCE COATING; TO MEET WIND LOAD REQUIREMENTS, 75% MIN. LIGHT TRANSMITTANCE, MAX. 15% REFLECTANCE. PROVIDE SAMPLES TO ARCHITECT FOR REVIEW. |
| 05 | CONCRETE SCORE LINES AT FACADE WALLS |
| 06 | 42" A.F.F. RAILING ENCLOSURE AT BALCONY & TERRACE |
| 07 | ROOF PARAPET |
| 08 | ACCESSIBLE RAMP 1:12 MAX. |
| 09 | MOTORIZED OVERHEAD COILING DOOR TO MEET WIND LOAD REQUIREMENTS |
| 10 | EXTERIOR STAIR AS PEDESTRIAN ACCESS TO BUILDING |
| 11 | ARCHITECTURAL FRAME |
| 12 | CONCRETE EYEBROW SLAB |
| 13 | ALUMINUM STOREFRONT ASSEMBLY FOR RESIDENTIAL AREA. LAMINATED TINTED GLASS W/ A HIGH PERFORMANCE COATING; TO MEET WIND LOAD REQUIREMENTS, 75% MIN. LIGHT TRANSMITTANCE, MAX. 15% REFLECTANCE. GLASS MUST NOT BE MIRRORED. PROVIDE SAMPLES TO ARCHITECT FOR REVIEW. |

SOUTH ELEVATION



KEY PLAN

SCALE: 1/64"= 20'



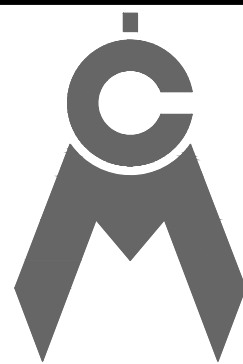
| PROJECT No.: | REV. # | DATE |
|-------------------------|--------|------|
| | 1 | |
| | 2 | |
| DESIGNED BY: O.M. | 3 | |
| | 4 | |
| DRAWN BY: | 5 | |
| | 6 | |
| CHECKED BY: O.M. | 7 | |
| ISSUE DATE: 09-01-2022 | 8 | |
| | 9 | |
| DRAWING SCALE: AS SHOWN | 10 | |

208 NORTH FEDERAL HWY
POMPAÑO BEACH, FL. 33062

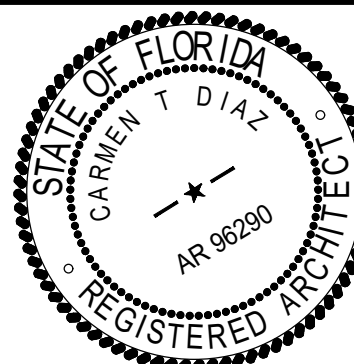
PZ21-12000041

06/06/2023

CAYMARES MARTIN
Architectural & Engineering Design
AA 26001552 CA 27136
5001 SW 74th Ct, Ste 100
Miami, FL 33155
Ph: (305) 669-5040 Fax:
(305) 669-5041
www.caymartindesign.com



ARCH. CARMEN T. DIAZ
LIC # AR 96290
5001 S.W. 74th COURT
SUITE 100
MIAMI, FL 33155
TEL (305) 669-5040
FAX (305) 669-5041



SHEET No:

A-3.3.2